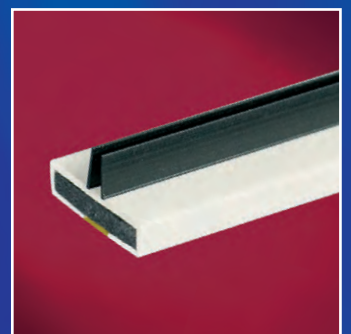
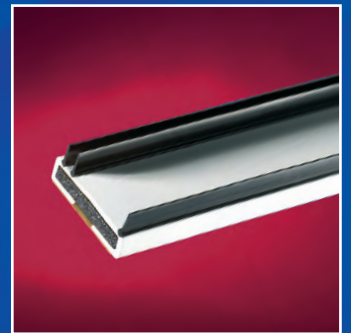
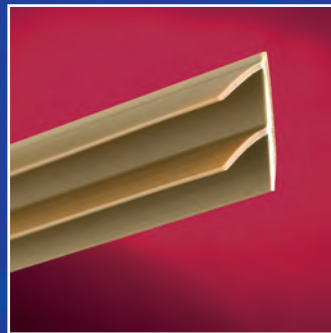


Acoustic Products

PYRO  **PLEX**®
FIRE CONTAINMENT SYSTEMS



Acoustic Products

As an ever increasing amount of people are living and working in closer proximity, the need for sound reduction is becoming a greater requirement.

This distinct range of acoustic products provides solutions to meet the requirements of Approved Document E. This states that to satisfy the acoustic requirements within 'dwelling houses, flats and rooms for residential purposes' [requirement E1] a doorset with a minimum sound reduction index of 29dB Rw is advisable.

To satisfy the requirements set out in Approved Document E for schools, it is necessary to meet the values for sound insulation that are given in Building Bulletin 93 the Acoustic Design of Schools. The document requires a minimum of 30dB Rw for doorsets.

Approved Document E also states that where appropriate, a doorset should satisfy the requirements of Building Regulation Part B – Fire Safety. In response to this, we have manufactured and tested a range of combined sealing solutions that provide acoustic, fire and smoke control.

The following symbols provide a quick view of the performance for the sealing solutions within the acoustic range:



Acoustic

Tested to BS EN ISO 140-3 and rated in accordance with BS EN ISO 717-1.



Fire

Tested to BS 476: Part 22 in relation to fire performance.



Smoke

Tested to BS 476: Part 31.1 in relation to smoke sealing performance.



Approved Document E

Satisfies the acoustic guidance for meeting the functional requirements of the building regulations.



Approved Document B

Satisfies the fire safety for meeting the functional requirements of the building regulations.

Pyroplex Limited

The Furlong, Droitwich,
Worcestershire WR9 9BG, UK

[t] +44 [0]1905 795432

[f] +44 [0]1905 796662

[e] info@pyroplex.com

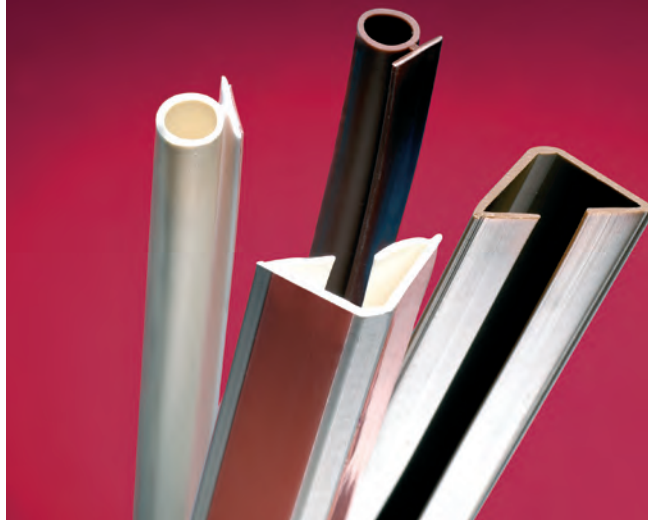
www.pyroplex.com

Perimeter seals

PYROPLEX®



REDDIPLEX



Threshold seals

REDDIPLEX



Acoustic, fire and smoke

Combined acoustic, fire and smoke seals provide an ideal solution to meet the requirements of Approved Document E for sound reduction and Approved Document B for fire safety.

Tested to:

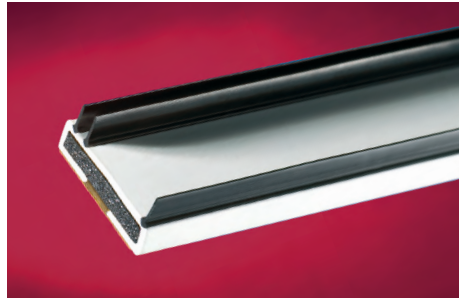
BS EN ISO 140-3: 1995 [Acoustics]
BS 476: Part 22: 1987 [Fire]
BS 476: Part 31.1: 1983 [Smoke]

Third Party Approval:

Certifire Certificate No. CF355 and CF822

TRIPLE FLIPPER

43dB



Code	Size	Colour
30141	15 x 4mm	○ ● ● ● ● ●
30148	20 x 4mm	○ ● ● ● ● ●

TWIN FLIPPER

41dB



Code	Size	Colour
30170	10 x 4mm	○ ● ● ● ● ●
30175	15 x 4mm	○ ● ● ● ● ●
30176	20 x 4mm	○ ● ● ● ● ●

Acoustic and smoke

Acoustic seals with added smoke sealing performance are ideal for new-build or upgrading of existing doorsets as a primary perimeter seal. Also for use as a secondary sealing solution to enhance the acoustic rating in specialist acoustic doorsets.

Tested to:

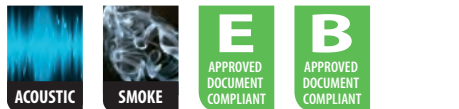
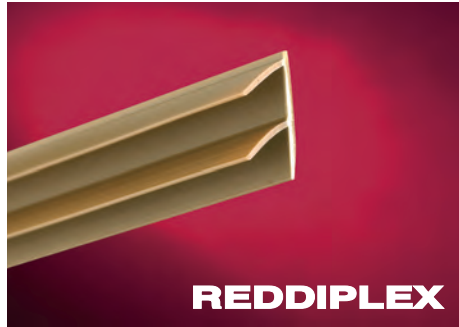
BS EN ISO 140-3: 1995 [Acoustics]
BS 476: Part 31.1: 1983 [Smoke]

Third Party Approval:

Certifire Certificate No. CF599

TWIN

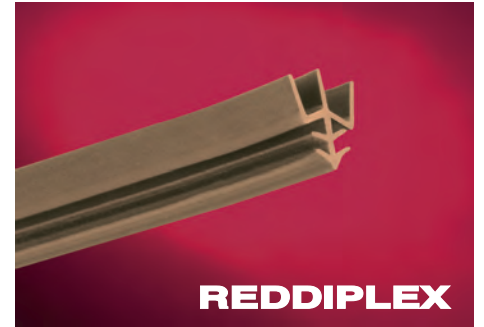
43dB



Code	Size	Colour
9945	12 x 5mm	○ ●

TRIDENT

43dB



Code	Size	Colour
10623	5.5 x 8.6mm	○ ●

N.B. Test evidence is available for use as a threshold seal.

Dropdown

Dropdown seals comply with Approved Document E. This states the doorset should have good perimeter sealing, including the use of threshold seals where practical.

Tested to:

BS EN ISO 140-3: 1995 [Acoustics]

N.B. Threshold Seals can be cut back by 100mm [max.] to suit the requirements of individual door leaves.

INTEGRAL

43dB



Code	Size	Colour
IDD835	835mm	○
IDD935	935mm	○
IDD1135	1135mm	○

SURFACE MOUNTED

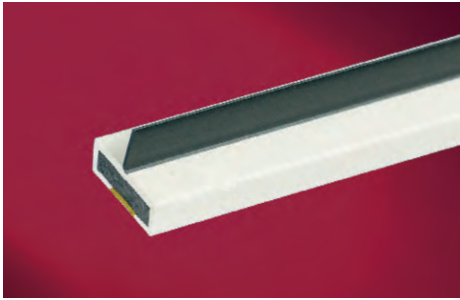
29dB



Code	Size	Colour
SMDD915	915mm	○

SINGLE FLIPPER

33dB



Code	Size	Colour
30160	10 x 4mm	○ ● ● ● ● ●
30165	15 x 4mm	○ ● ● ● ● ●
30166	20 x 4mm	○ ● ● ● ● ●

SIDE FLIPPER

32dB



Code	Size	Colour
30150	10 x 4mm	○ ● ● ● ● ●
30155	15 x 4mm	○ ● ● ● ● ●
30156	20 x 4mm	○ ● ● ● ● ●

FIRE AND SMOKE

29dB



Code	Size	Colour
8512	10 x 4mm	○ ● ● ● ● ●
8712	15 x 4mm	○ ● ● ● ● ●
8612	20 x 4mm	○ ● ● ● ● ●

BUBBLE

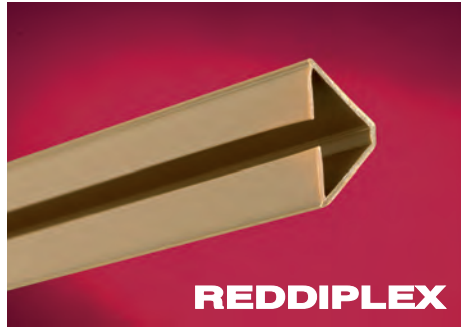
42dB



Code	Size	Colour
9927	5.5mm diameter	○ ●

CORNER

42dB



Code	Size	Colour
9946	12 x 12mm	○ ●
10624	15 x 15mm	○ ●

Colour code:

- White
- Black
- Brown
- Red
- Grey
- Cream

Astragal seal

Meeting style – To ensure good perimeter sealing, it is necessary to use an astragal seal at the meeting edge of double doorsets.

Tested to:

BS EN ISO 717-1: 1997 [Acoustics]

ASTRAGAL

34dB



Code	Size	Colour
AMS2100	2100mm	○

Colour code:

- Aluminium

Acoustic product selector

Single Seal Solutions – 44mm Timber Fire Rated Door Core

Single Action, Single Leaf

Result	Fully Caulked	Core Type	Primary	Threshold	Glazing
32 dB Rw	33 dB Rw	Graduated Density Chipboard	Twin Flipper	Integral	N/A
30 dB Rw	33 dB Rw	Graduated Density Chipboard	Single Flipper	Integral	N/A
29 dB Rw	31 dB Rw	Lamel	Side Flipper	Integral	N/A
31 dB Rw	35 dB Rw	Graduated Density Chipboard	Side Flipper	Integral	Pyroguard 7mm
31 dB Rw	35 dB Rw	Graduated Density Chipboard	Triple Flipper	Integral	Pyroguard 7mm

Combination Seal Solutions – 44mm Timber Fire Rated Door Core

Single Action, Single Leaf

Result	Fully Caulked	Core Type	Primary	Perimeter Seals		Glazing
				Supplementary	Threshold	
30 dB Rw	31 dB Rw	Lamel	Side Flipper	Twin	Integral	N/A
32 dB Rw	33 dB Rw	Graduated Density Chipboard	Twin Flipper	Twin	Integral	N/A
31 dB Rw	33 dB Rw	Graduated Density Chipboard	Twin Flipper	Corner	Integral	N/A
30 dB Rw	31 dB Rw	Lamel	Single Flipper	Twin	Integral	N/A
32 dB Rw	32 dB Rw	Graduated Density Chipboard	Twin Flipper	Twin	Integral	Pyrodux 10mm
33 dB Rw	35 dB Rw	Graduated Density Chipboard	Single Flipper	Twin	Integral	Pyroguard 7mm
32 dB Rw	32 dB Rw	Graduated Density Chipboard	Side Flipper	Twin	Integral	Pyrodux 10mm
29 dB Rw	32 dB Rw	Graduated Density Chipboard	Single Flipper	Twin	Surface Mounted	Pyrodux 10mm

Single Action, Double Leaf

Result	Fully Caulked	Core Type	Primary	Perimeter Seals		Meeting Style
				Supplementary	Threshold	
34 dB Rw	35 dB Rw	Graduated Density Chipboard	Twin Flipper	Twin	Integral	Astragal, Twin, Trident x2

Specialist Seal Solutions – 54mm Acoustic Door Core

Single Action, Single Leaf

Result	Fully Caulked	Core Type	Primary	Perimeter Seals		Glazing
				Supplementary	Threshold	
38 dB Rw	43 dB Rw	Specialist Acoustic Core	Triple Flipper	N/A	Integral	N/A
42 dB Rw	43 dB Rw	Specialist Acoustic Core	Triple Flipper	Bubble	Trident x2	N/A
42 dB Rw	43 dB Rw	Specialist Acoustic Core	Triple Flipper	Corner	Trident x2	N/A
43 dB Rw	43 dB Rw	Specialist Acoustic Core	Triple Flipper	Twin	Integral, Trident x2	N/A

N.B. Glazing used within the doorset relates to 25% of the overall door leaf.

PYROPLEX[®]
FIRE CONTAINMENT SYSTEMS

The Furlong, Droitwich, Worcestershire WR9 9BG, UK
[t] +44 [0]1905 795432 [f] +44 [0]1905 796662 [e] info@pyroplex.com
www.pyroplex.com

Issue No. 1 – October 2012

